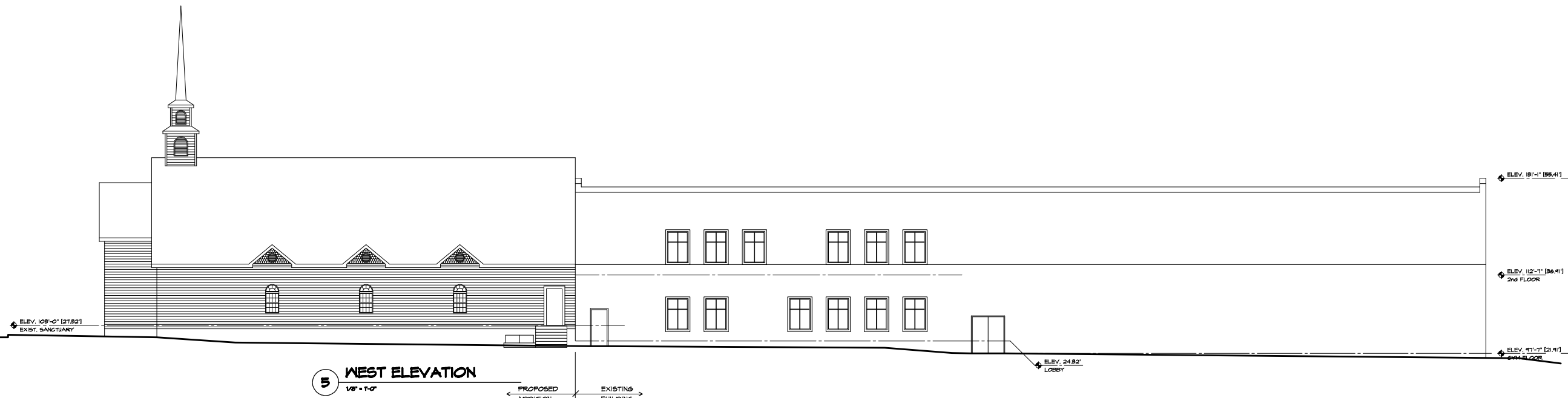


4 SOUTH ELEVATION
 1/8" = 1'-0"



5 WEST ELEVATION
 1/8" = 1'-0"

DESIGN DEVELOPMENT
 PROGRESS DRAWINGS

Project: PROPOSED ALTERATIONS & ADDITION TO CALVARY BAPTIST CHURCH
 LITTLE EGG HARBOR, NJ

Scale: AS SHOWN	Project No.: 4,107
Drawn By: DLM	Drawing No.: A-5
Checked By: F.J.J. MDS	ELEVATIONS
Date: 12/14/2011	

